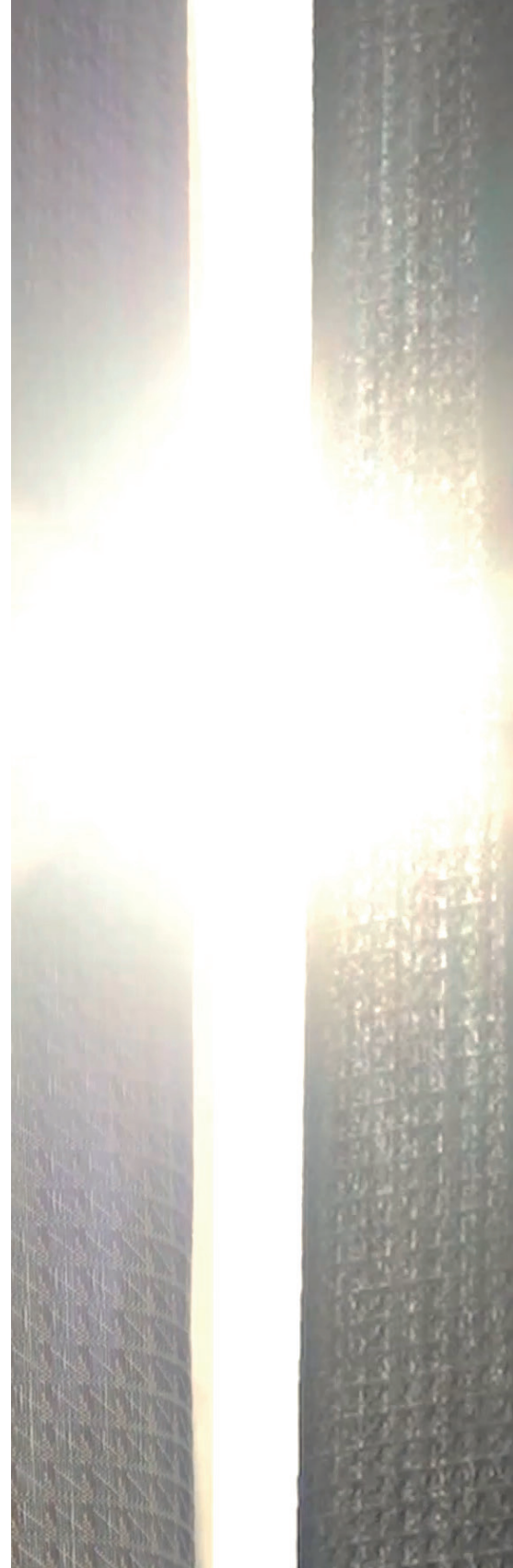
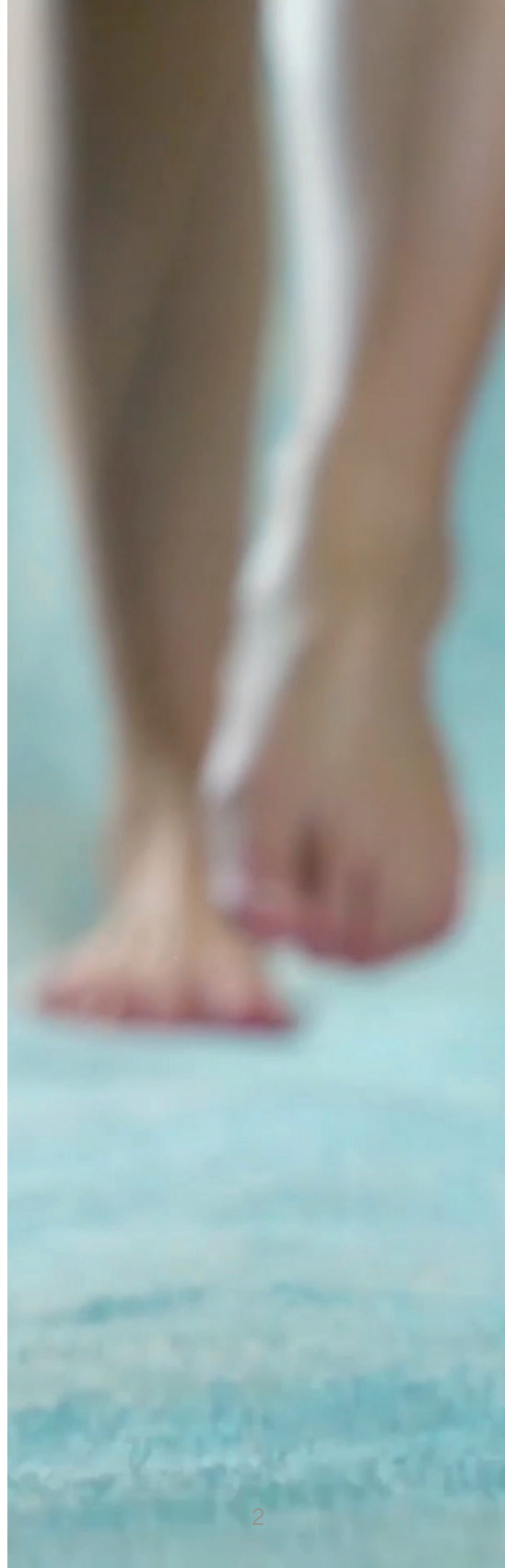




# AURA

K ◻ H R ◻  
ITALY



K  H R   
ITALY

AURA

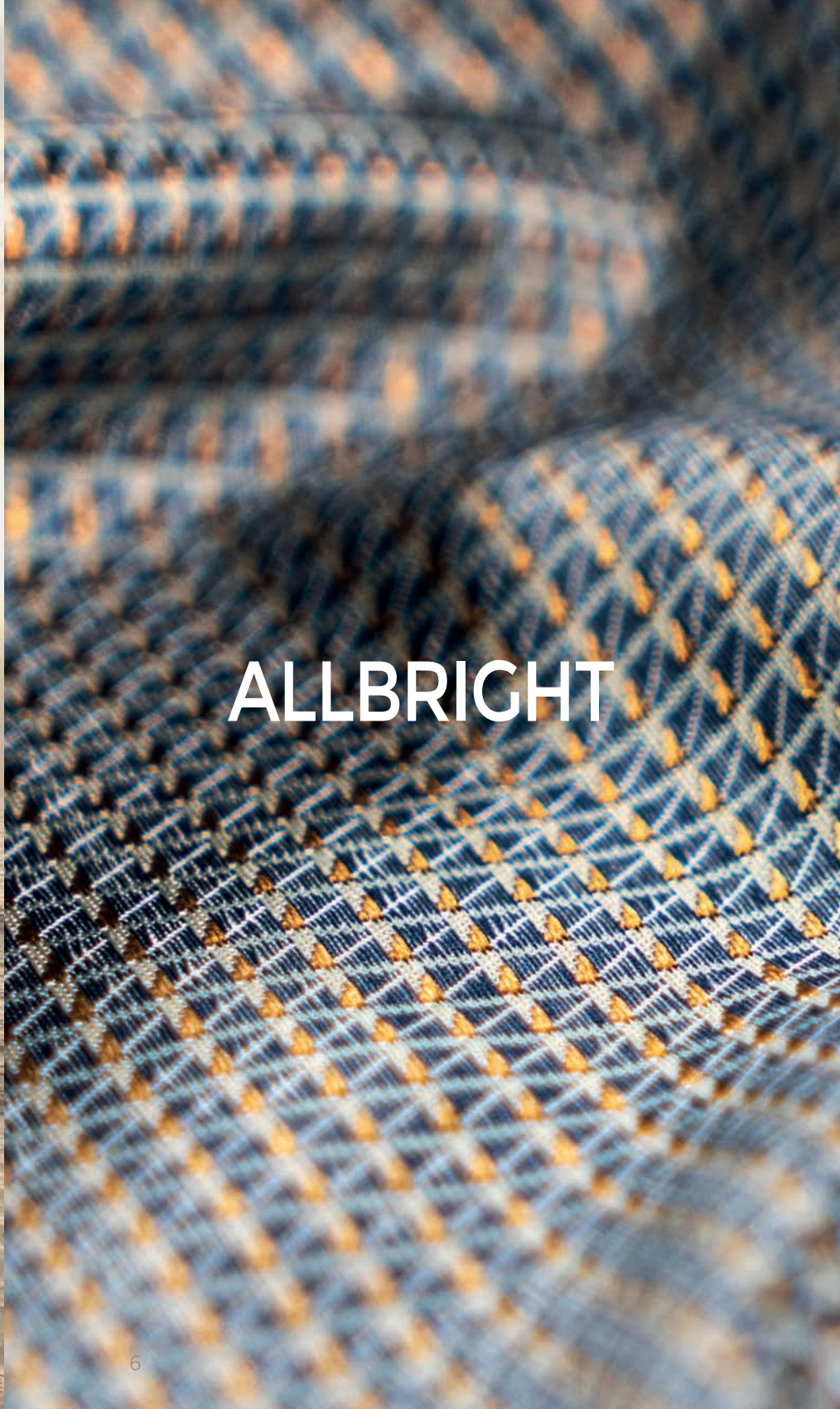
THE RADIANT  
CALLIGRAPHY  
OF AIR



In the soft embrace of early morning aura, the world awakens with a gentle waft of light, freshness, and tenderness touching things and skin. The latest KOHRO collection captures these subtle energies, where every breath is a caress of air and a delicate ripple of light. It embodies the fluid passage of days, inviting you to explore the realm of tranquility and quietude—a return to the intangible sanctuary of self-care.

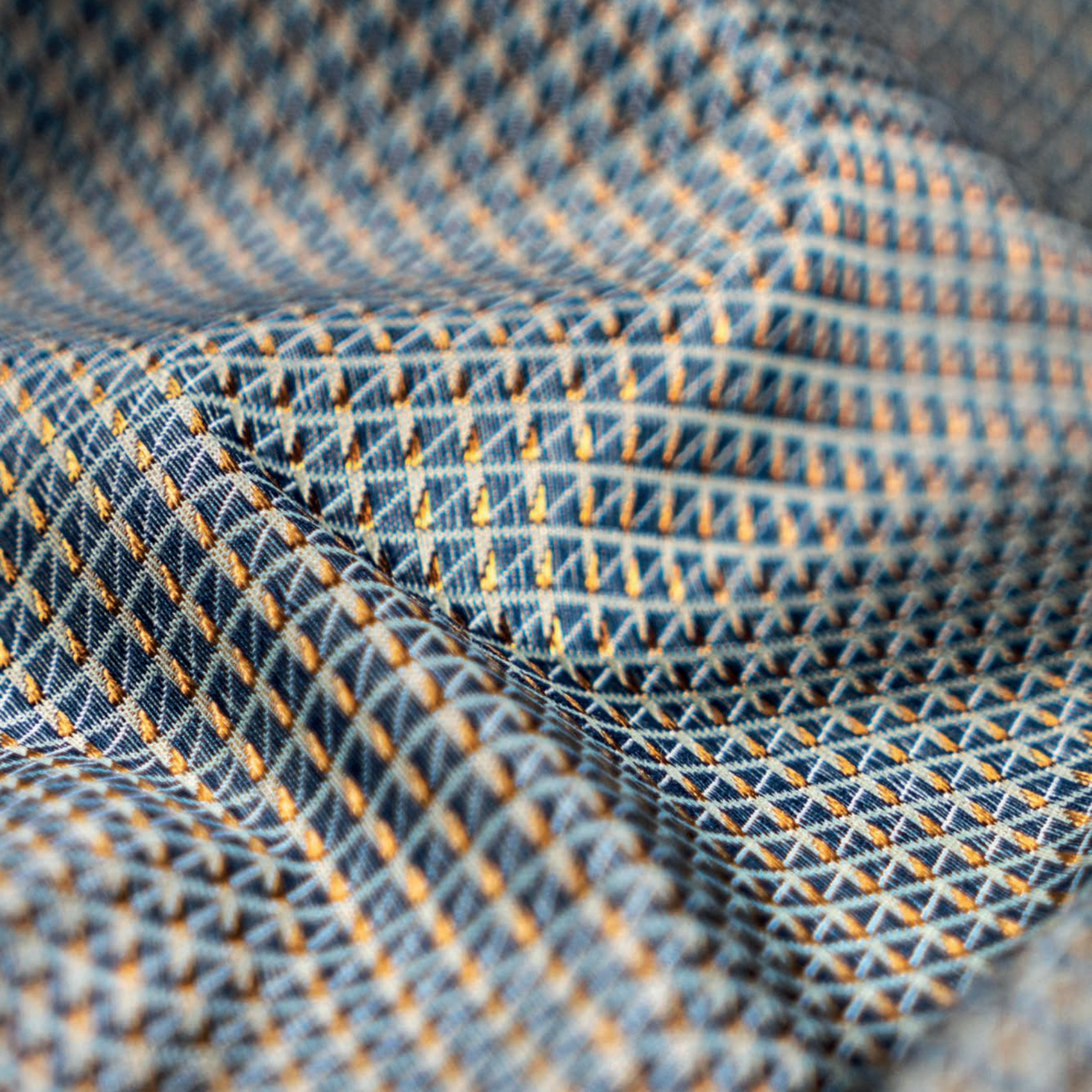
AURA presents a serene and ethereal signature, featuring gentle, luminous, and flowing shapes that gracefully unfold in a harmonious palette of rosy, earthy, arctic, and neutral tones. Like Virginia Woolf's notion of "a room of one's own," this collection adorns your personal space with elegance. Just as in our ALLBRIGHT fabric, AURA showcases a serene and highly reflective geometry, enriched with silk that captures and scatters light, enchanting your surroundings. Similarly,

GOLDEN YEARS weaves a tale of a metallic thread that skillfully mimics the shimmering, subtle glow of water along the shoreline. SOUNDSCAPE, a precious cotton jacquard, evokes the soothing sounds of the sea with traces streaked by water, wind, and light. In SHODO indelible marks create a unique abstract and contemporary style inspired by the ancient Japanese art of calligraphy. The narrative takes on a figurative form in AUBADE, where flora and fauna come to life at the break of dawn, and in SHIRAITO, a tribute to the enchanting waterfalls of Japan. GIVERNY captivates with its luminous vibrations and pearly surfaces, enhanced by the presence of linen and chenille. Meanwhile, IBIZA is a delicately lively pattern with an almost stroboscopic appearance. Rich in visual and tactile cues, AURA is a collection that unfolds across multiple dimensions, enriching interiors and those who inhabit them with a renewed breath of life.



ALLBRIGHT









GIVERNY











# SOUNDSCAPE









SHODO







SHIRAITO







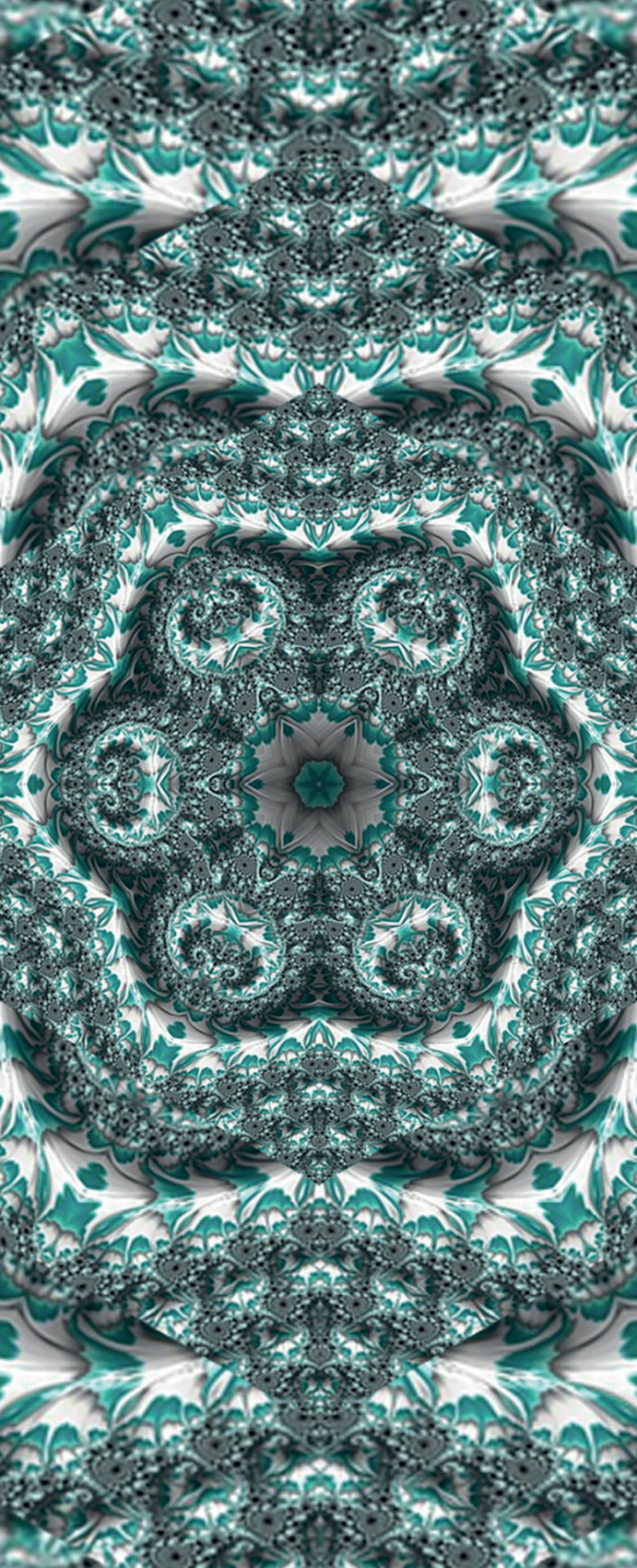


AUBADE







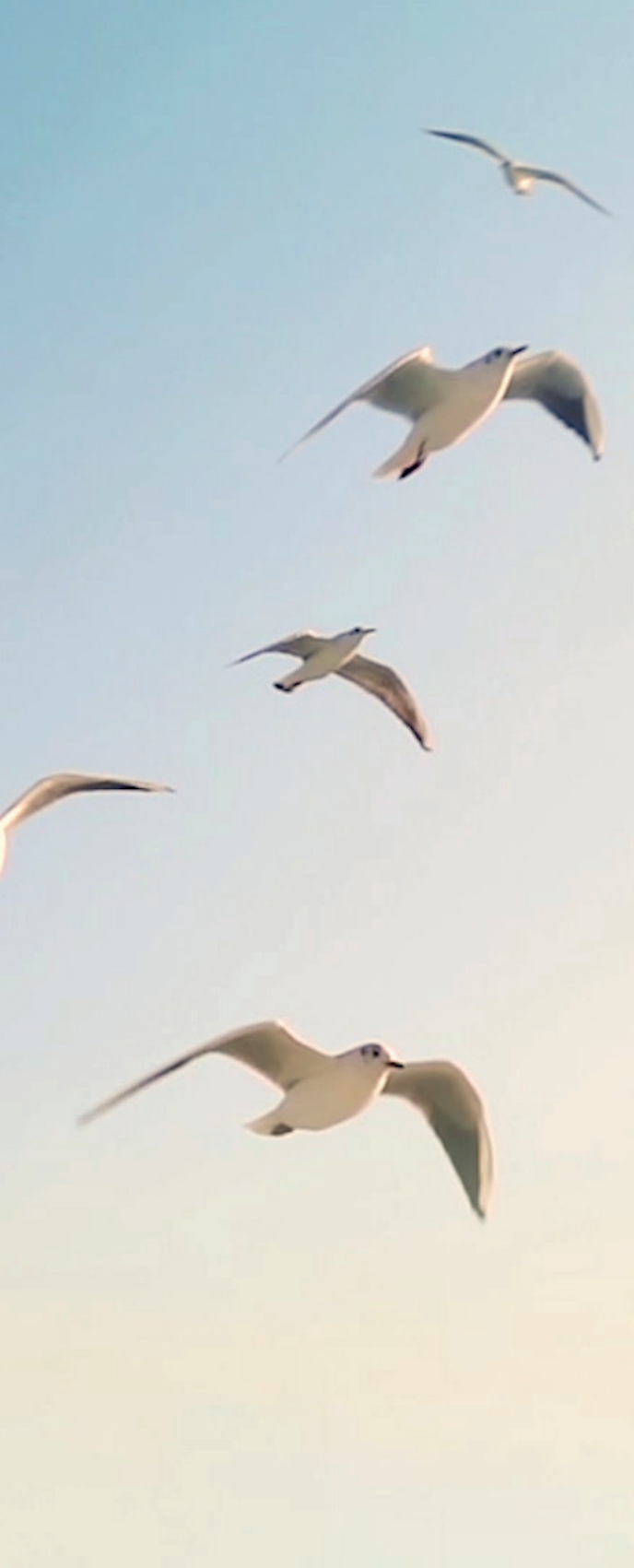


IBIZA



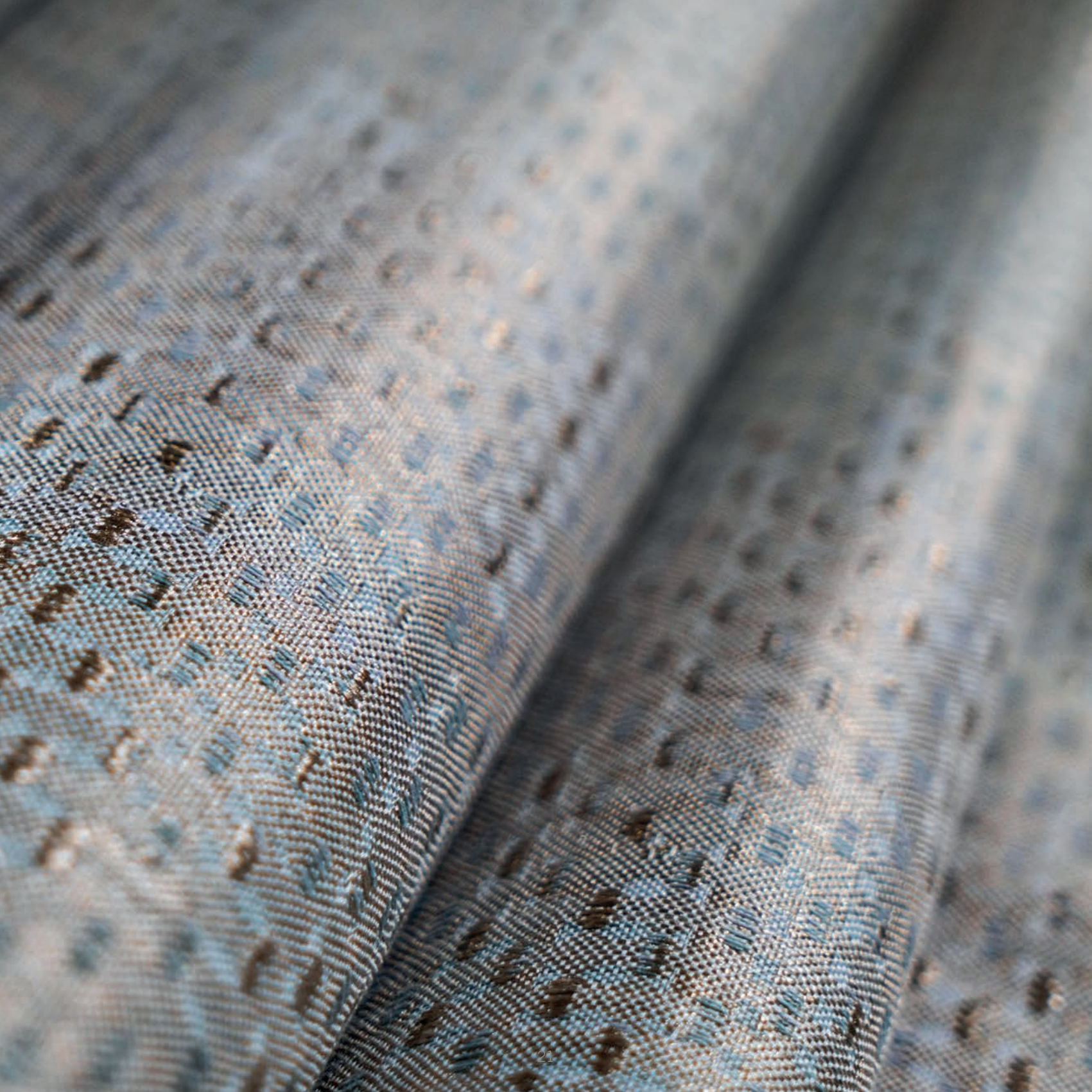






# GOLDEN YEARS

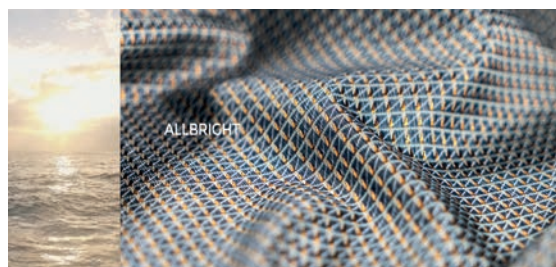








# AURA THE RADIANT CALLIGRAPHY OF AIR



Pag. 06-07

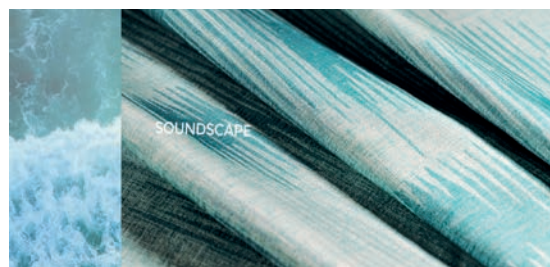
## ALLBRIGHT

**Inspiration:** sunrise over the sea

**Composition:** cotton, silk

**Features:** small iridescent geometric pattern

**Use:** bed, accessories, wallcovering, curtains



Pag. 10-11

## SOUNDSCAPE

**Inspiration:** blowing light and wind on water

**Composition:** cotton

**Features:** streaked chiaroscuro

**Use:** bed, accessories, wallcovering, curtains, table



Pag. 08-09

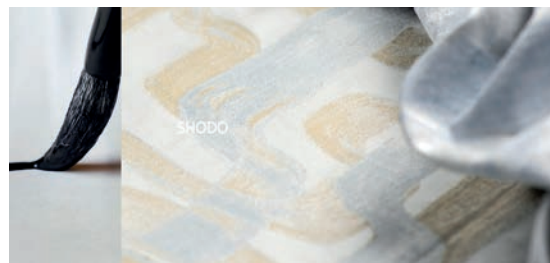
## GIVERNY

**Inspiration:** Monet's Garden

**Composition:** linen, cotton, chenille

**Features:** pearl design - soft and vibrant

**Use:** accessories, upholstery



Pag. 12-13

## SHODO

**Inspiration:** Japanese calligraphy

**Composition:** cotton

**Features:** abstract design

**Use:** bed, accessories, wallcovering, curtains, table



Pag. 14-15

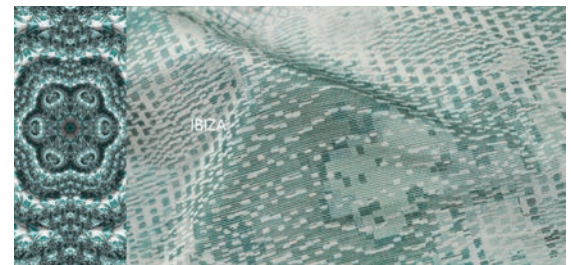
### SHIRAITO

**Inspiration:** Japanese waterfall

**Composition:** cotton

**Features:** unbreathable design

**Use:** bed, accessories, wallcovering, curtains, table



Pag. 18-19

### IBIZA

**Inspiration:** kaleidoscope

**Composition:** cotton

**Features:** 70s pattern with a stroboscopic look

**Use:** accessories, bed, wallcovering, curtains, table



Pag. 16-17

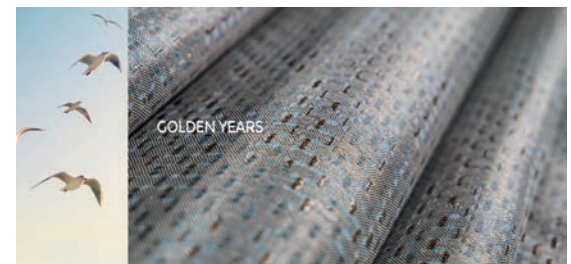
### AUBADE

**Inspiration:** bamboo forests at dawn

**Composition:** cotton

**Features:** sophisticated softness with a metallic tone

**Use:** bed, accessories



Pag. 20-21

### GOLDEN YEARS

**Inspiration:** sunset over the sea

**Composition:** cotton

**Features:** dégradé brightness

**Use:** bed, accessories, upholstery, wallcovering, curtains

